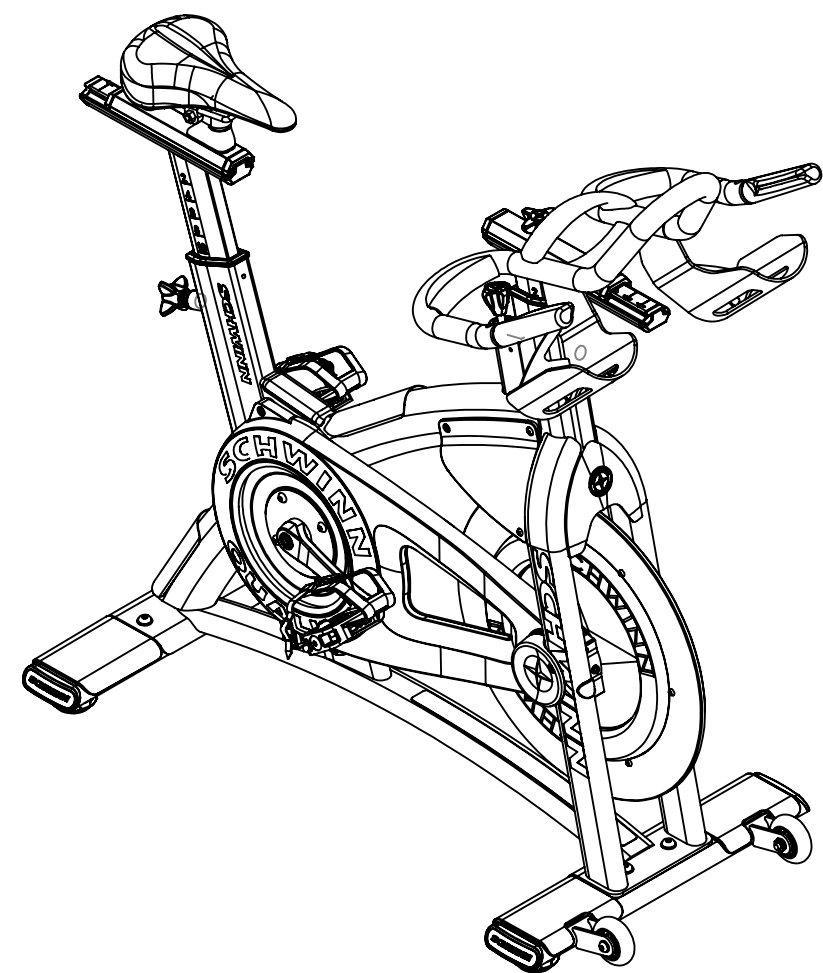
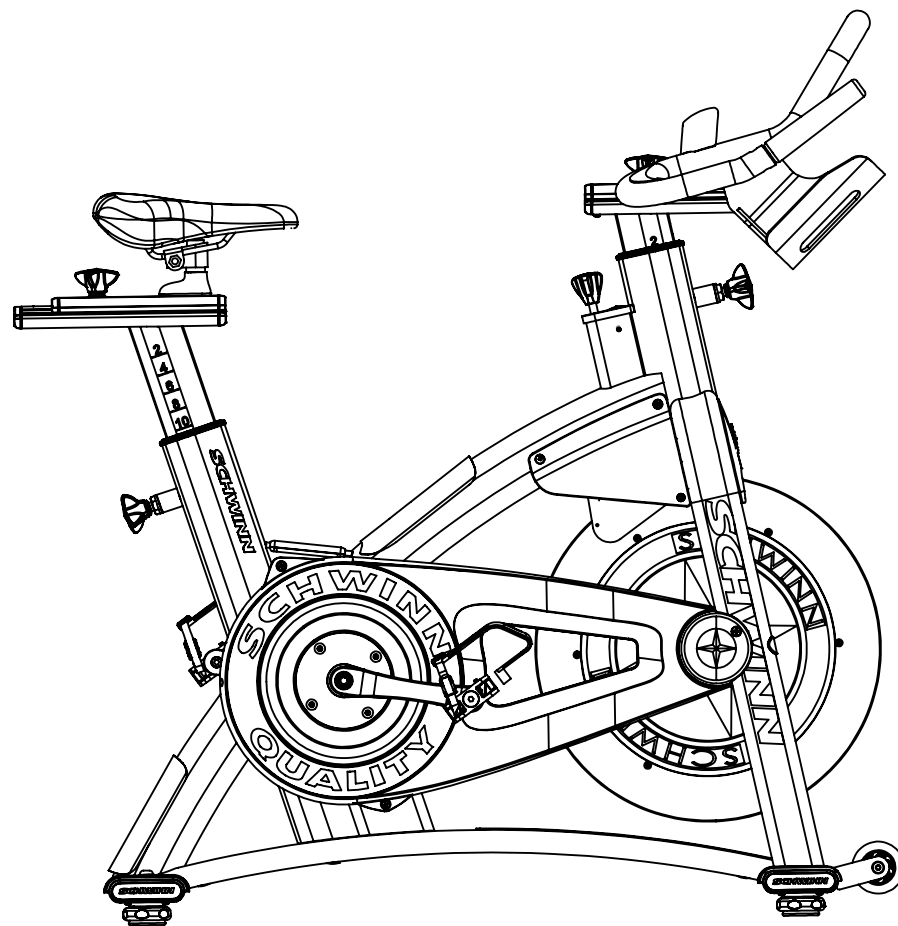
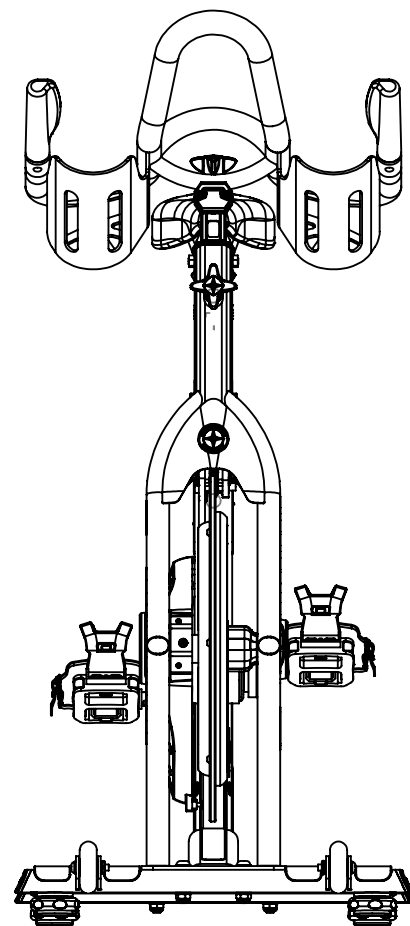
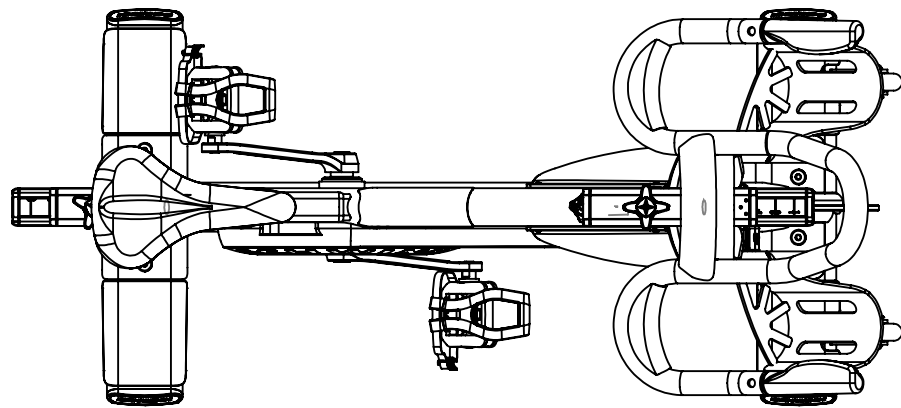


REVISION HISTORY				
REV	DATE	DESCRIPTION	ECO	BY
A	7/25/2013	PRODUCTION RELEASE	14303	OT



**DOCUMENT STATUS:**

**NOTICE OF PROPRIETARY INFORMATION**

THIS DOCUMENT SHALL NOT BE REPRODUCED NOR SHALL THE INFORMATION CONTAINED HEREIN BE USED BY OR DISCLOSED TO OTHER EXCEPT AS EXPRESSLY AUTHORIZED BY CORE HEALTH & FITNESS, LLC.

CLASS OF WORK	UNLESS OTHERWISE SPECIFIED DIMS ARE IN mm. TOLERANCES FOR MEASURE OF LENGTH ARE:								ANGLES = ±2°
	0.5 to 3	> 3 to 6	> 6 to 30	> 30 to 120	> 120 to 400	> 400 to 1000	> 1000 to 2000	> 2000	
FINE	±0.05	±0.05	±0.1	±0.15	±0.2	±0.3	±0.5	----	
MEDIUM X	±0.1	±0.1	±0.2	±0.3	±0.5	±0.8	±1.2	±2	
COARSE	±0.2	±0.3	±0.5	±0.8	±1.2	±2	±3	±4	
VERY COARSE	----	±0.5	±1	±1.5	±2.5	±4	±6	±8	

MATERIAL  
SEE BOM

FINISH  
N/A

VENDOR:

P/N:

THIRD ANGLE PROJECTION



	INITIAL	DATE
DRAWN	OT	7/25/2013
CHECKED		
APPROVED		

**CORE HEALTH & FITNESS, LLC**  
4400 NE 77th Ave., Suite 300  
Vancouver, WA 98662

CORE PART NO	REV
<b>000-0166</b>	<b>A</b>
TITLE ASSY, BIKE, ACPP BELT	
SCALE: 1:50	SHEET 1 OF 7
SHEET SIZE: B	

ITEM NO.	PART NUMBER	Description	QTY.
1	000-0037	CHAIN GUARD OUTER	1
2	000-0116	CHAIN GUARD BLANK	1
3	000-0121	ALUMINUM RING, SCHWINN QUALITY	1
4	000-0122	ADHESIVE RING	1
5	000-0085	SEAT ASSEMBLY	1
6	000-0096	SCHWINN QUALITY BADGE, 40 MM	1
7	000-0097	SCHWINN QUALITY BADGE, 65 MM	1
8	000-0098	BRAKE ADJMENT HOUSING ASSY	1
9	000-0100	COVER, RIGHT DROP OUT	1
10	000-0106	SCREW, M6x1.0x60, HHM, SS	2
11	000-0115	COVER, CHAIN TENSIONER LEFT	1
12	000-0120	STICKER, SERIAL NUMBER, ACPV2	1
13	000-0123	CHAIN GUARD BACK	1
14	000-0124	BRAKE ADJUSTMENT CAP	1
15	000-0149	SCREW, M5X0.8 X 12, TRUSS HEAD, SS	2
16	000-0150	HANDLEBAR ASSY, SAC	1
17	001-0055	STABILIZER, FRONT, ALUMINUM, WDMT	1
18	000-0141	PAD, STABILIZER	2
19	902-2945	NUT-HEX 0375-16 G2-ZINC	2
20	001-0595	STABILIZER FOOT - 3/8 - 16	2
21	001-0688	ASSEMBLY, TRANSPORT WHEEL	2
22	902-5033	SCW-BHCS M8x1.25x45 SS	2
23	902-6065	WSH-FLAT M8 REGULAR SS	4
24	740-7656	FEET, LEVELING, SPINNER	2
25	000-0136	END CAP, STABILIZER	2
26	902-4182	NUT HEX M10 - 1.5 SS	2
27	000-0137	SCREW, PHT, M4 X 10,SS	8
28	001-0535	THREADED BRAKE ADJUSTMENT NUT	1
29	001-0540	LINK, BRAKE ADJUSTMENT SIDE	2
30	001-0541	BRONZE BUSHING, BRAKE ADJUSTMENT LINK	4
31	001-0750	ASSEMBLY, BRAKE CARRIAGE	1
32	003-5551	FORK DECAL (PERFORMANCE)	1
33	003-8569	TORSION SPRING, BRAKE	1
34	902-4172	NUT NL M10-1.5 SS	4
35	902-4986	SCREW, PHP, M4x0.7x10, SS	4
36	902-5050	SCW-BHCS M10x1.5x50 SS	4

ITEM NO.	PART NUMBER	Description	QTY.
37	902-5550	SCW-RHP M5x0.8x12 SS	4
38	902-5701	SCW-SHCS M10-1.5x45 SS	1
39	902-6065	WSH-FLAT M8 REGULAR SS	8
40	902-5550	SCW-RHP M5x0.8x12 SS	6
41	002-2765	SLEEVE, SEAT POST/HANDLEBAR ASSY	2
42	001-0019	WELDMENT, MAINFRAME, AC PERF	1
43	002-2265	POP PIN ASSEMBLY	2
44	000-0112	STRETCH PAD, TOP TUBE, ACPV	1
45	000-0119	STRETCH PAD, BOTTOM BRACE, ACPV	1
46	000-0143	STRETCH PAD, TOP TUBE, UPPER SECTION	1
47	000-0107	NUT, M6x1.0, SFL, SS	2
48	000-0035	SWEATGUARD RIGHT ASSY	1
49	000-0135	PAD, RUBBER, BRAKE BUMPER, SAC	1
50	000-0036	SWEATGUARD, LEFT, ASSY	1
51	000-0018	STRETCH PAD, TOP TUBE GUSSET	1
52	000-0113	PLUG, TENSION BOLT	2
53	000-0111	PLUG, 13.5MM, FRAME	3
54	001-0731	M5 RIVNUT	10
55	000-0177	WASHER, ACPV POP PIN	2
56	000-0176	TAPE, VHB, ACPV TOP TUBE GUSSET	1
57	000-0011	AC PEDAL ASSY, SET (1261-WAMD10-001)	1
58	000-0175	WASHER, M8X2.3, SS, NARROW	2
59	000-0168	PULLEY, LARGE, SAC BELT	1
60	000-0169	CRANK ARM, DRIVE, 4 BOLT ISIS	1
61	000-0173	SCREW, M8X14, BHSC, SS	4
62	000-0174	NUT, M8X1.0, HEX, SS	4
63	80044	CRANK BOLT 8MM HEX FOR ISIS	2
64	003-1508	ISIS BB, 68X113 MM	1
65	002-2780	RIGHT CRANK ARM, ISIS	1
66	000-0043	PAD, FEET PROTECTOR, WITH ADHESIVE	2
67	001-0055	STABILIZER REAR ALUMINUM WDMT	1
68	001-0595	STABILIZER FOOT - 3/8 - 16	2
69	902-2945	NUT-HEX 0375-16 G2-ZINC	2
70	740-7656	FEET, LEVELING, SPINNER	2
71	000-0136	END CAP, STABILIZER	2
72	000-0172	FLYWHEEL, ACPV BELT	1
73	000-0171	BELT, ACPV, 8M1440-12	1
74	000-0102	CHAIN TENSION BLOCK	2

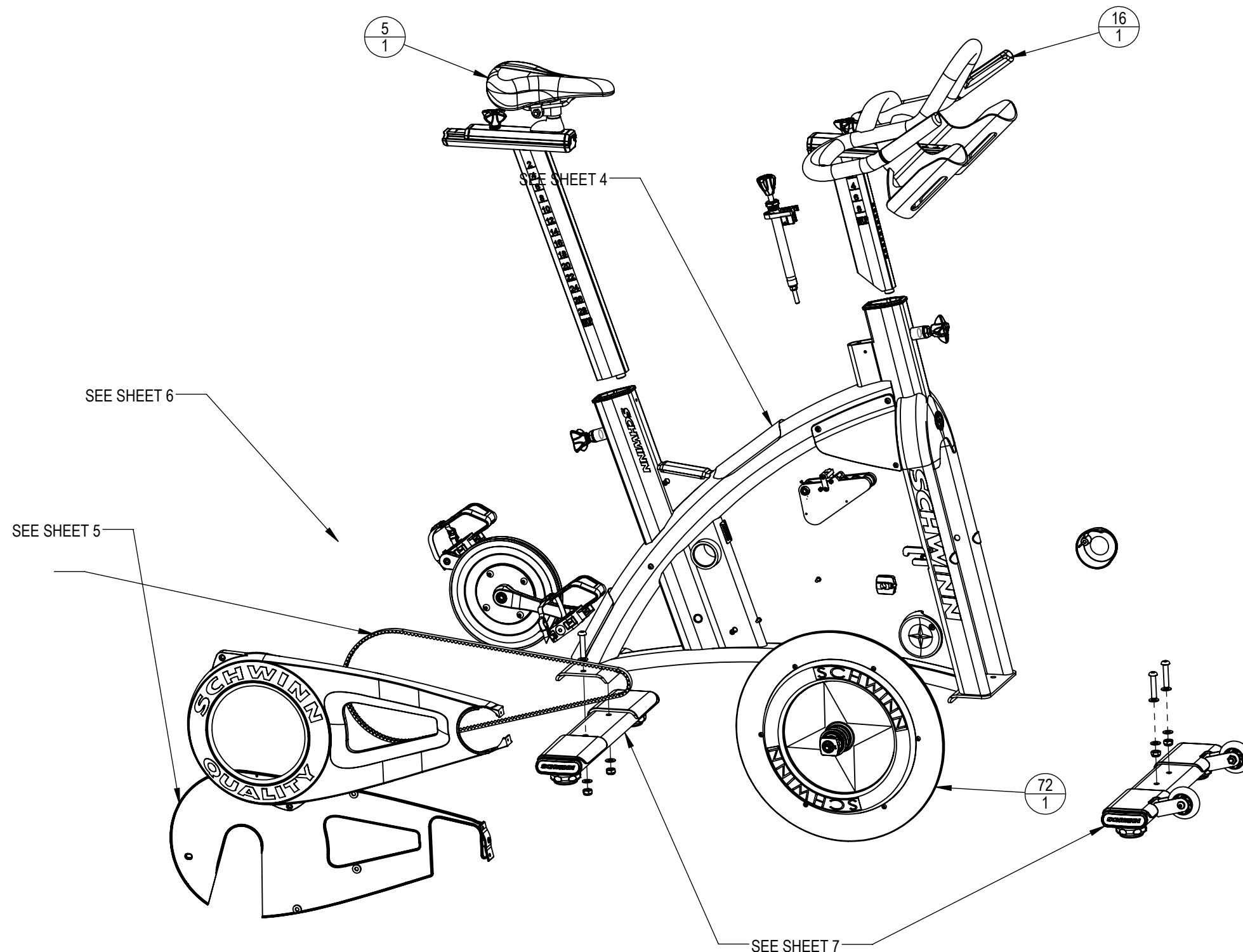


**CORE HEALTH & FITNESS, LLC**  
 4400 NE 77th Ave., Suite 300  
 Vancouver, WA 98662

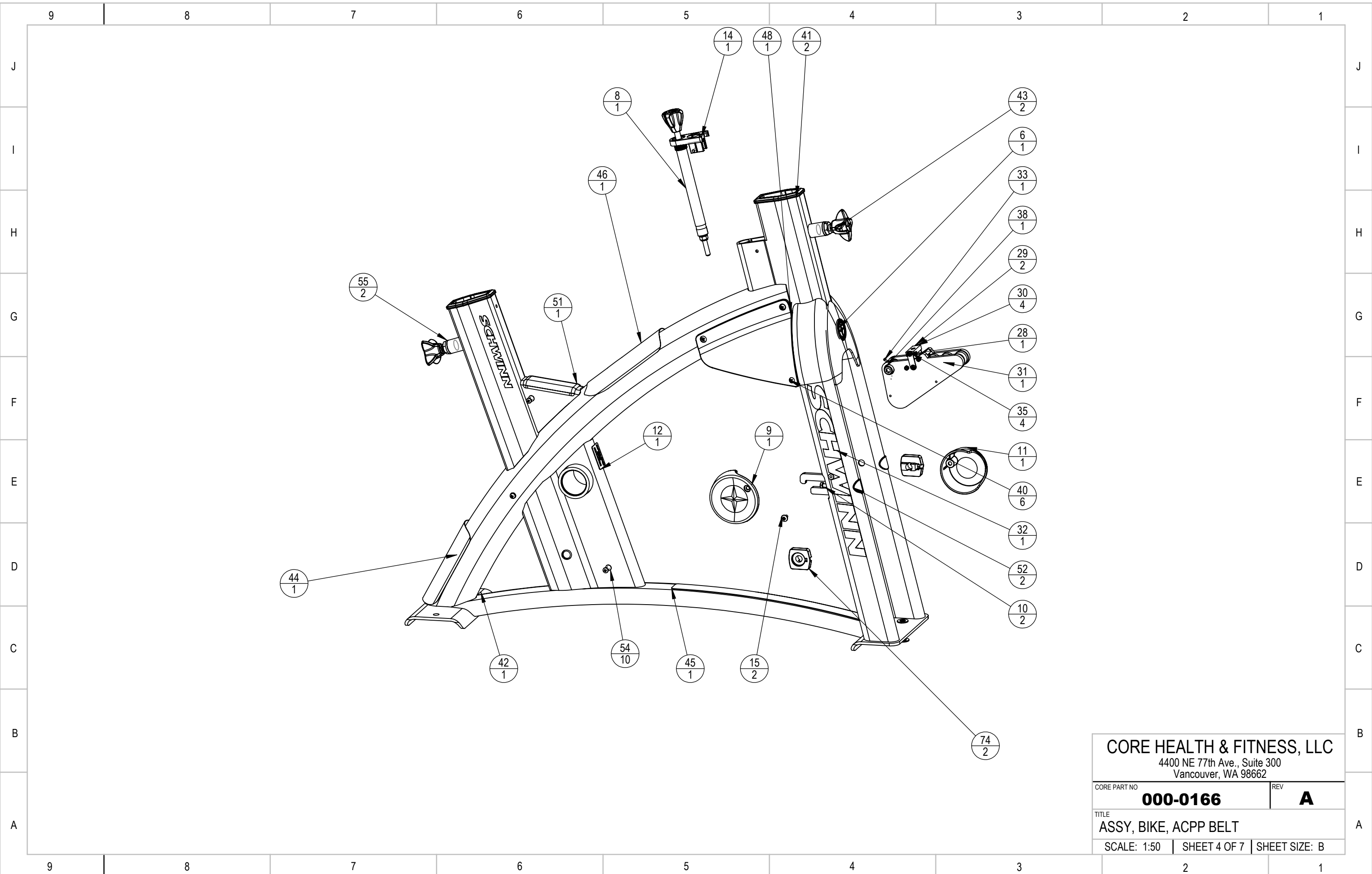
CORE PART NO	<b>000-0166</b>	REV	<b>A</b>
TITLE <b>ASSY, BIKE, ACPV BELT</b>			
SCALE: 1:50	SHEET 2 OF 7	SHEET SIZE: B	

NOTES:

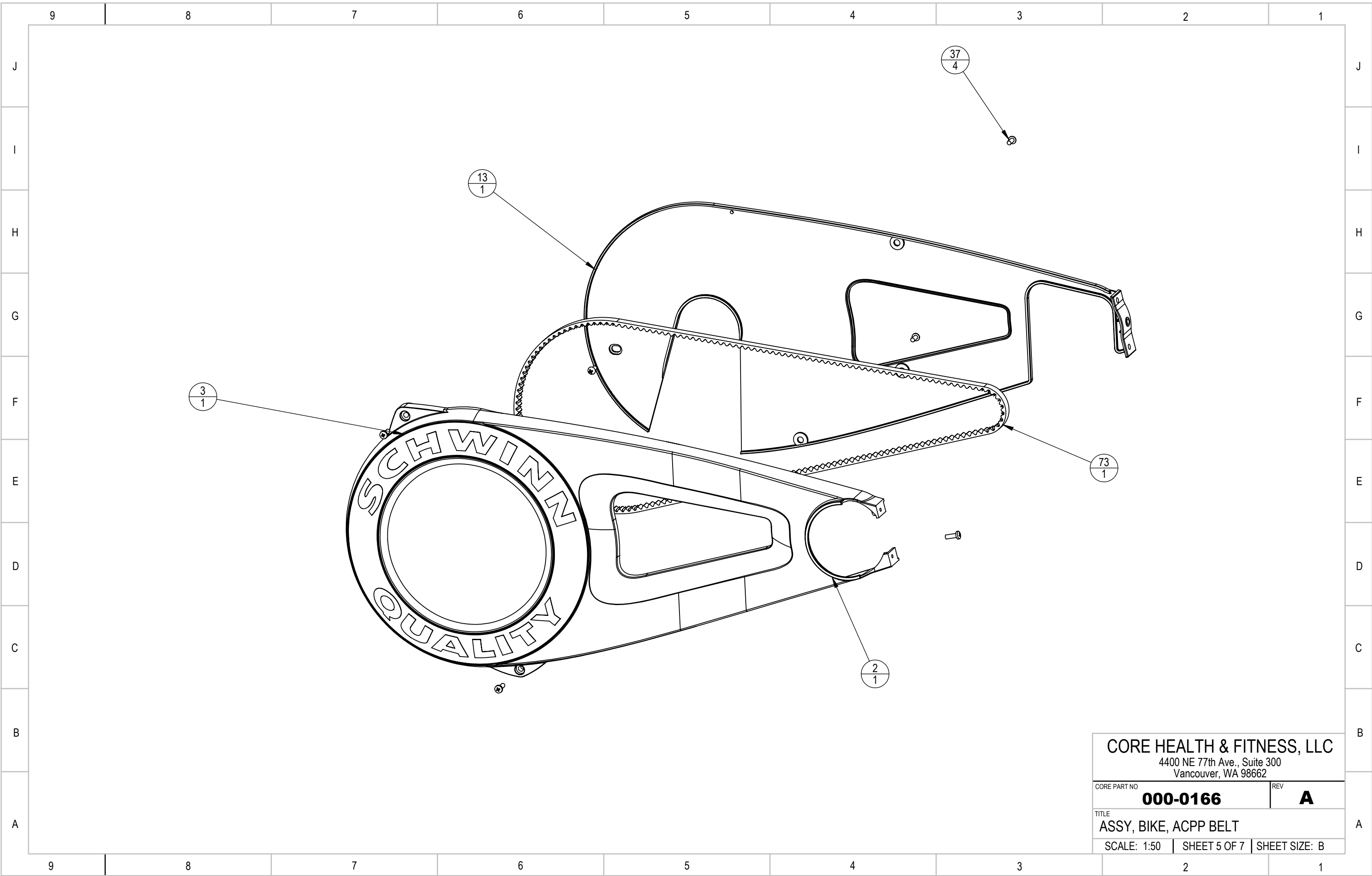
- 1. BELT TENSION: 85 LBS (100 LBS NEW)



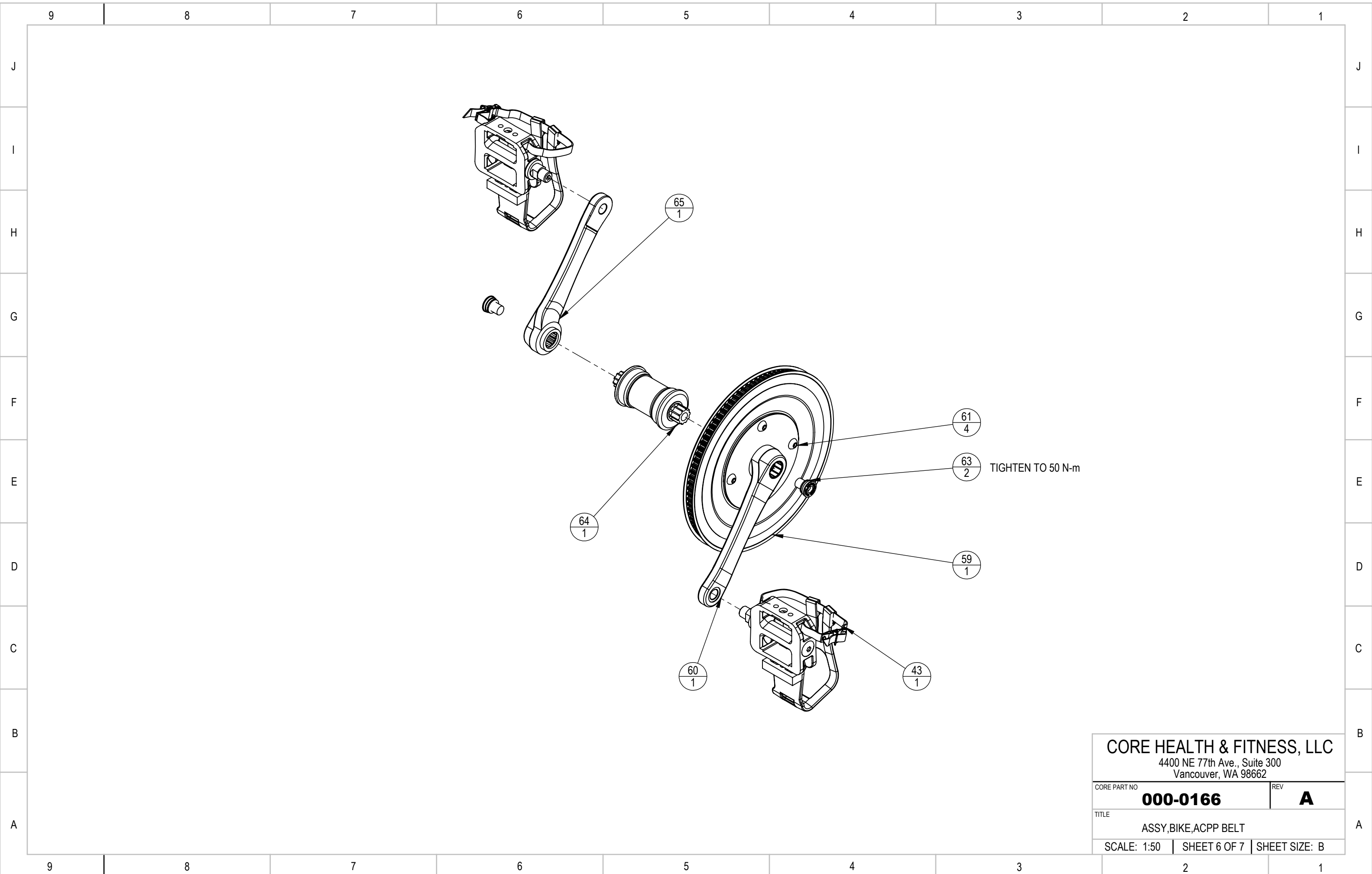
CORE HEALTH & FITNESS, LLC 4400 NE 77th Ave., Suite 300 Vancouver, WA 98662		
CORE PART NO	<b>000-0166</b>	REV <b>A</b>
TITLE ASSY, BIKE, ACPP BELT		
SCALE: 1:50	SHEET 3 OF 7	SHEET SIZE: B



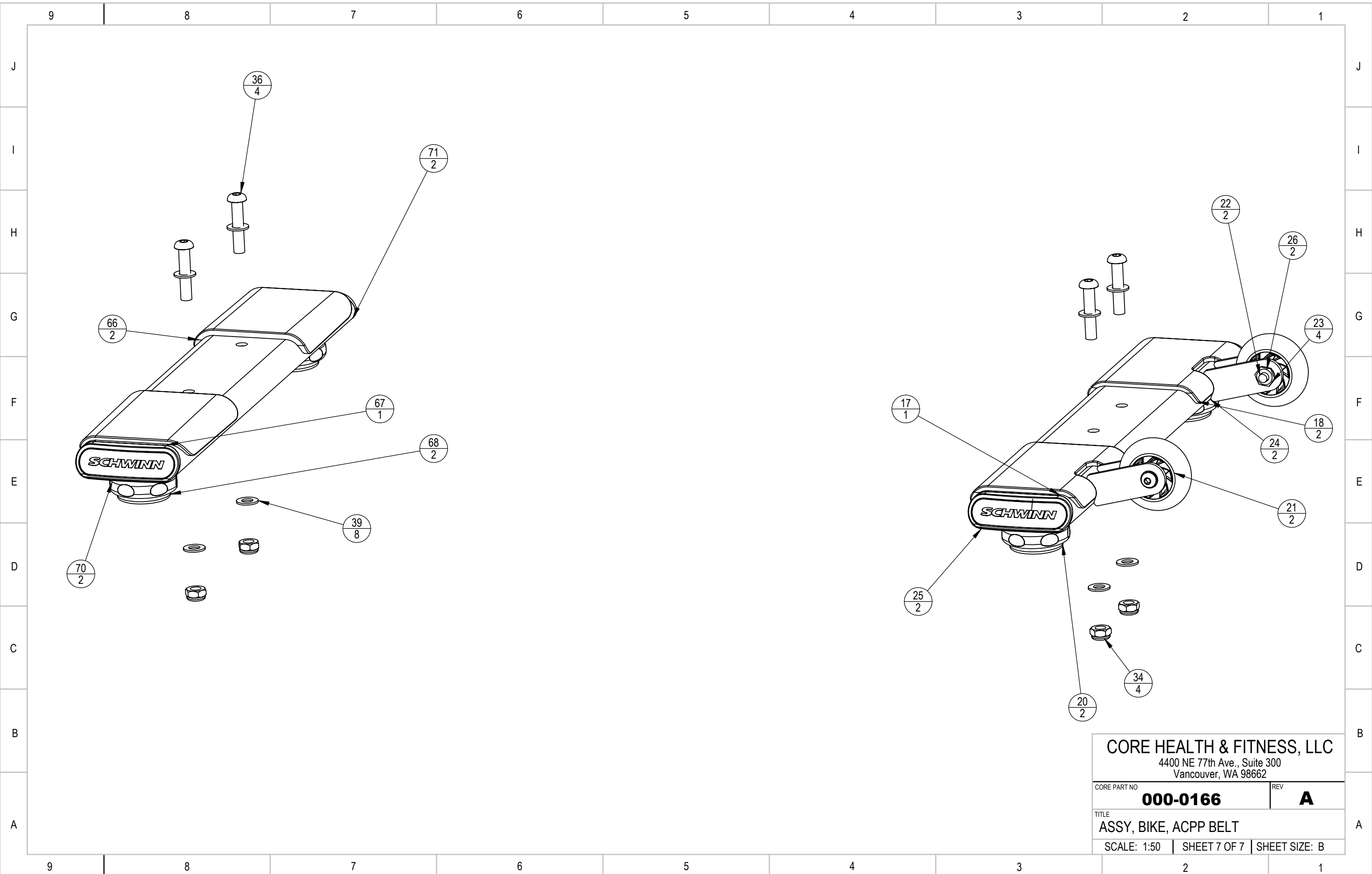
<b>CORE HEALTH &amp; FITNESS, LLC</b> 4400 NE 77th Ave., Suite 300 Vancouver, WA 98662		
CORE PART NO	<b>000-0166</b>	REV <b>A</b>
TITLE <b>ASSY, BIKE, ACPP BELT</b>		
SCALE: 1:50	SHEET 4 OF 7	SHEET SIZE: B



<b>CORE HEALTH &amp; FITNESS, LLC</b> 4400 NE 77th Ave., Suite 300 Vancouver, WA 98662		
CORE PART NO	<b>000-0166</b>	REV <b>A</b>
TITLE ASSY, BIKE, ACPP BELT		
SCALE: 1:50	SHEET 5 OF 7	SHEET SIZE: B



<b>CORE HEALTH &amp; FITNESS, LLC</b> 4400 NE 77th Ave., Suite 300 Vancouver, WA 98662		
CORE PART NO	<b>000-0166</b>	REV <b>A</b>
TITLE ASSY, BIKE, ACPP BELT		
SCALE: 1:50	SHEET 6 OF 7	SHEET SIZE: B



**CORE HEALTH & FITNESS, LLC**  
 4400 NE 77th Ave., Suite 300  
 Vancouver, WA 98662

CORE PART NO	<b>000-0166</b>	REV	<b>A</b>
TITLE			
ASSY, BIKE, ACPP BELT			
SCALE: 1:50	SHEET 7 OF 7	SHEET SIZE: B	